

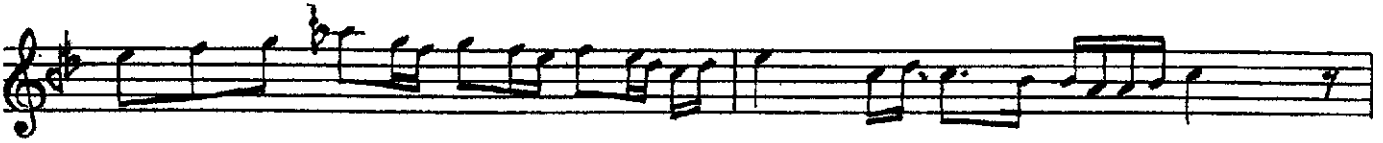
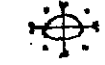
MUHAYYER SÜNBULE KÂR-I CEDÎD

Beste
Tolga Bektaş

USÛL : Aksaksemâî (1.96)

Âh Se-râ-seri dâğ-cis-mim sî-
 nem â tes âh var dil de (Saz...
 ...) Bi lin-mez ney-di ği bir il-
 Fû rû ğun dan ğu neş bir zer-
 le ti can- gâh var dil- de
 re ol- maz mâh var dil- de
 Âh be li yâr Âh be li dost
 Âh âh a man Yâr yar a man
 Âh Ne var? rûz u şe bîm yek- renk
 o- lur- sa ber kî â- hım- dan (Saz...
 (pp)

2. sayfaya →



Sofyân (♩ = 66)



Yürüksemâî (♩ = 130)



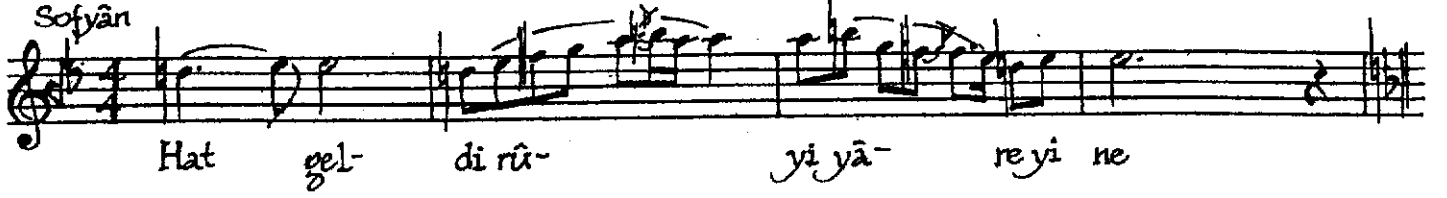
Sofyân



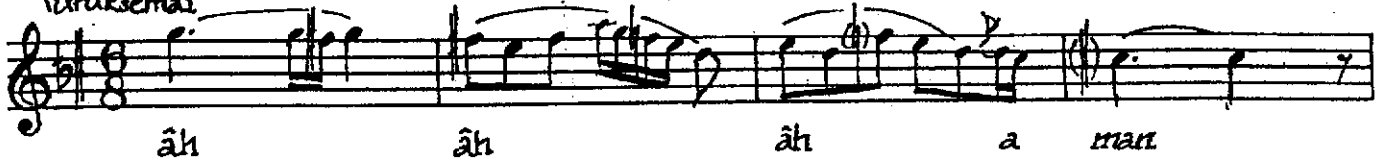
Yürüksemâi



Sofyân



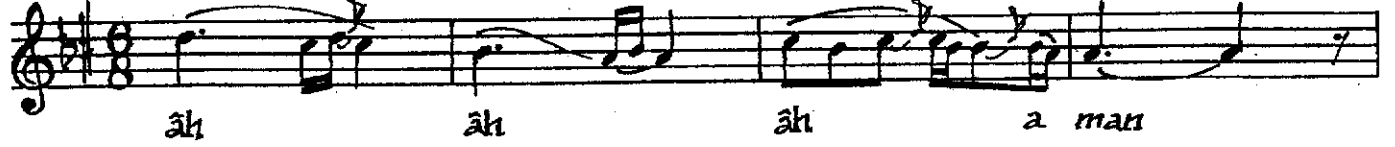
Yürüksemâi



Sofyân



Yürüksemâi



Aksak (♩=98)





sofyanı (♩ = 66)



Der - dü gamu la kal - ma mı sı ken (saz)

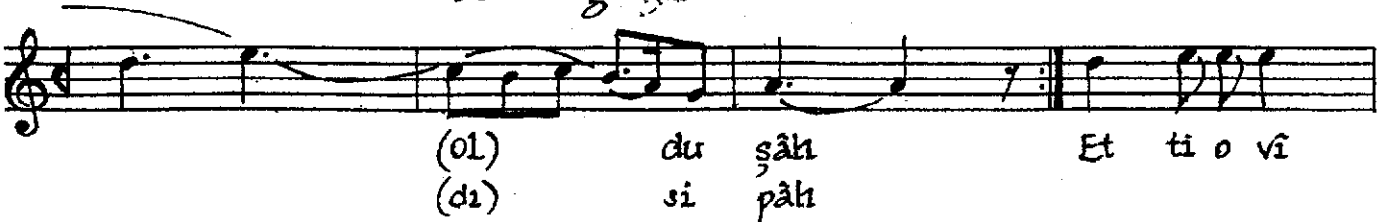
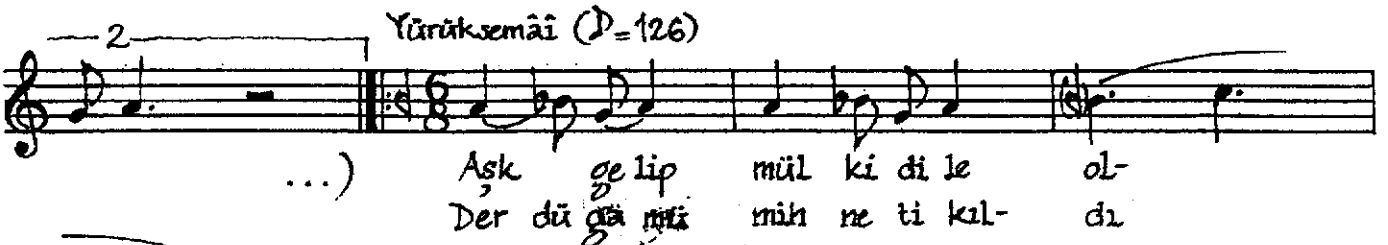
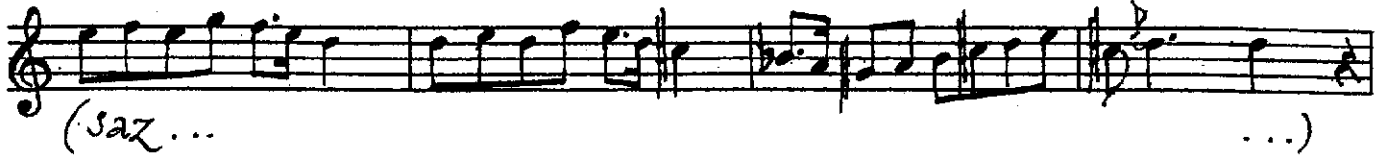
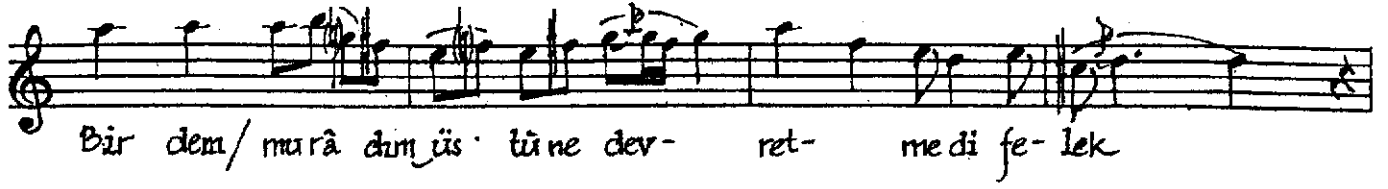
Et- mek te bir ka rā rayi ne āh

A musical score for a vocal line, likely for a soprano or alto. The key signature has one flat (B-flat), and the time signature is 7/8. The melody consists of several measures with eighth and sixteenth notes, some beamed together. There are four vocalizations labeled 'ah' written below the staff, corresponding to specific notes or rests in the melody. The notation includes a treble clef, a key signature of one flat, and a time signature of 7/8.

Handwritten musical notation on a single staff. The tempo is marked as $\text{♩} = 92$. The notation includes a treble clef, a key signature of one sharp (F#), and a common time signature (C). The melody consists of eighth and sixteenth notes. Below the staff, the text "(saz ...)" is written.



(sax... ...)



Handwritten musical notation for the vocal line. It features a treble clef and a key signature of one flat (B-flat). The melody is written on a five-line staff. The lyrics are written below the staff: "râ ne yi mâ mâ- (mâ) re". The notation includes various note values, rests, and a long slur over the final phrase "(mâ) re".

[illegible]

(cil) ve gâh Âh min'el-

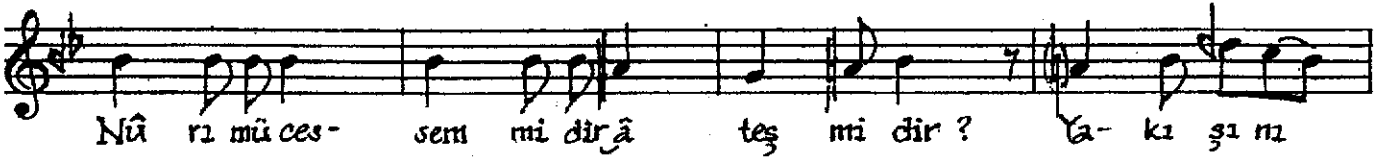
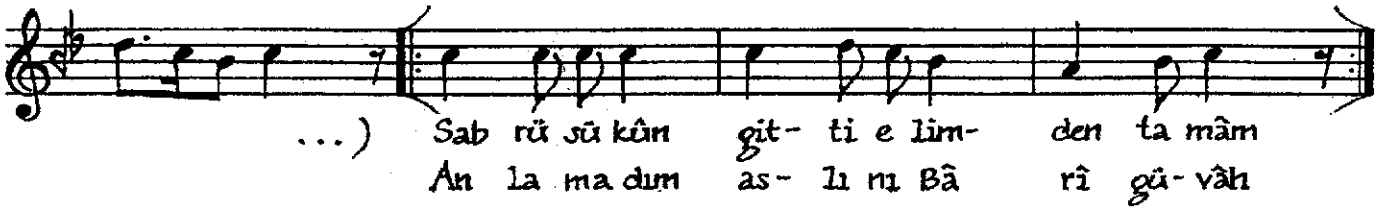
hi Ah ra ka kal- bi bi-ha ra ra-

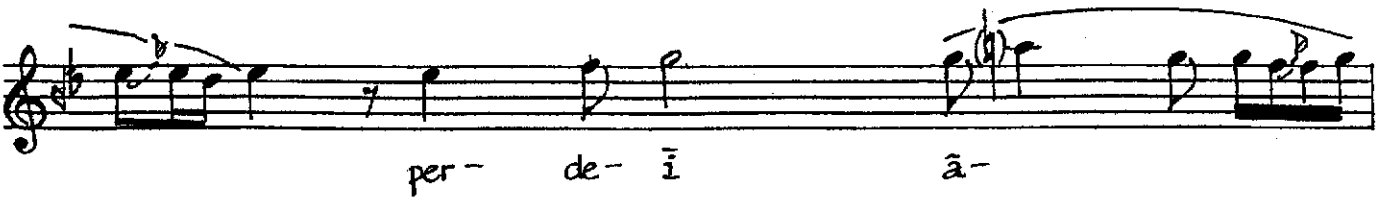
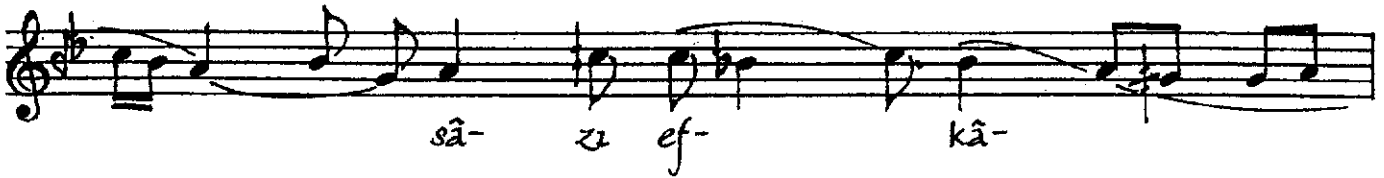
Handwritten musical notation for the vocal line. The melody is written on a single staff with a treble clef. It begins with a key signature of one flat (B-flat) and a common time signature (C). The tempo is marked as $(D=188)$. The lyrics are written below the staff: *(râ)* *ti hî* *(Saz terennümü...)*. The notation includes various note values, rests, and a repeat sign.

[illegible]

yan di de rü nû) Meş' a le ler (nû) bi
rân Nû rı te cel- lî do lup ol hâ-
(hâ) ni kah Ar- sa-i mah-
şer gi bi ol du a
yan Cû- ze-be-gû- şe ni ce bin dâ-
di hâh Âh mi n'el-

aşk ve hâ-lâ. tî hî Atı ra ka kal-
(♩ = 220)
bi bi-ha râ- râ lî hî (saz tereñmüümü...
...)) Sür mu? Mâ
tem mi bi lin- mez ya- kîn Nâ yu ku düm /
i le ge lir âh âh Hay ret a lıp
ak lı mı ol- dum ha mûş Deh se tim id-





hüm mu- hay- yer-

sün- bü le (Saz...

...) Her çi bâ- dâ-

bād bağ- lan-

dım he- vâ- yı

kâ kü le (Saz...

...) Cüz- le- sem de

â şî kâr et

sem. de câ nım

sın be nım (saz.....)

(2. de ağırlaşarak ve sönerek...) [SON]